

SC Stivuitoare-Lize SRL

Telefon: 0040 744 136 717

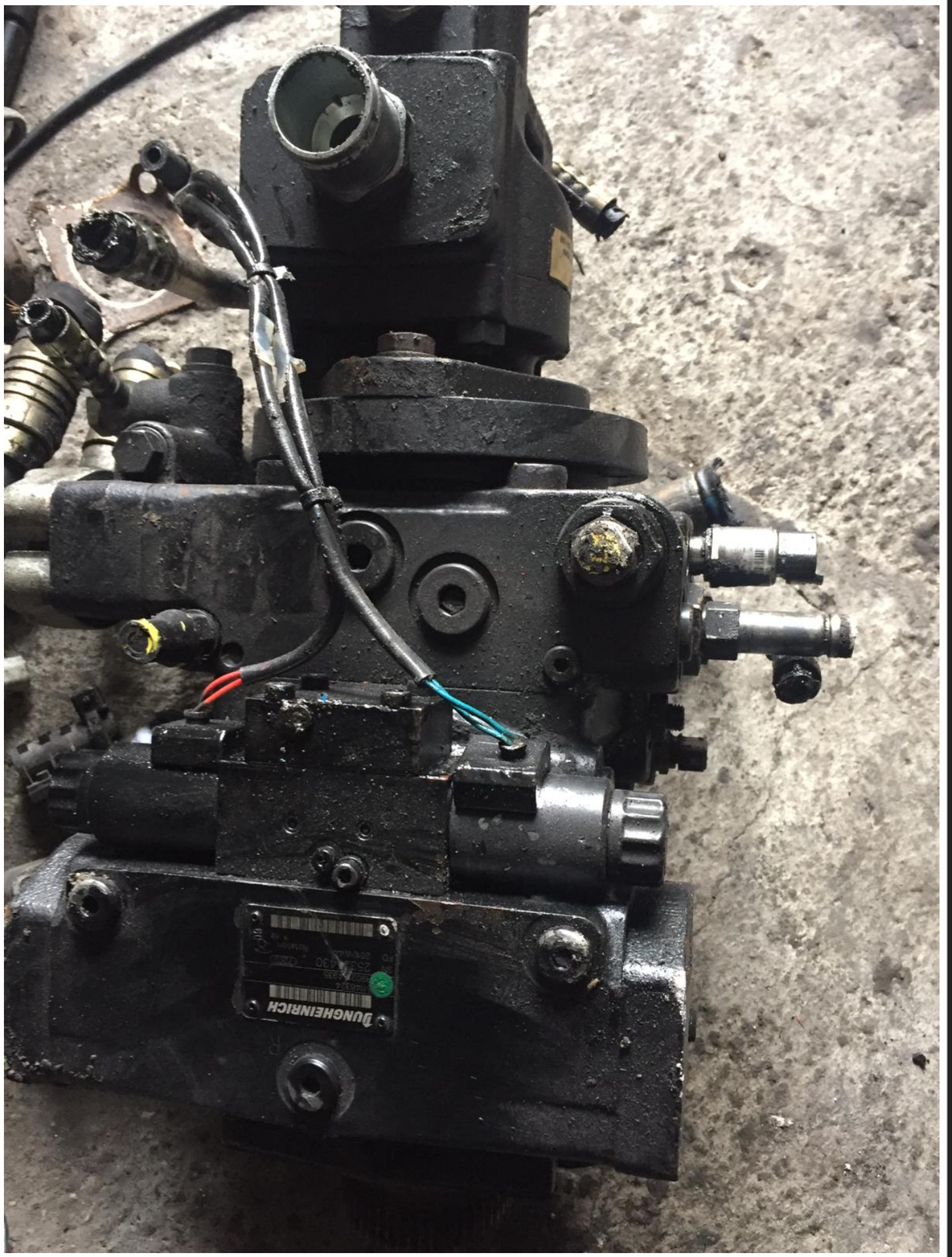
Email: office@stivuitoare-lize.ro

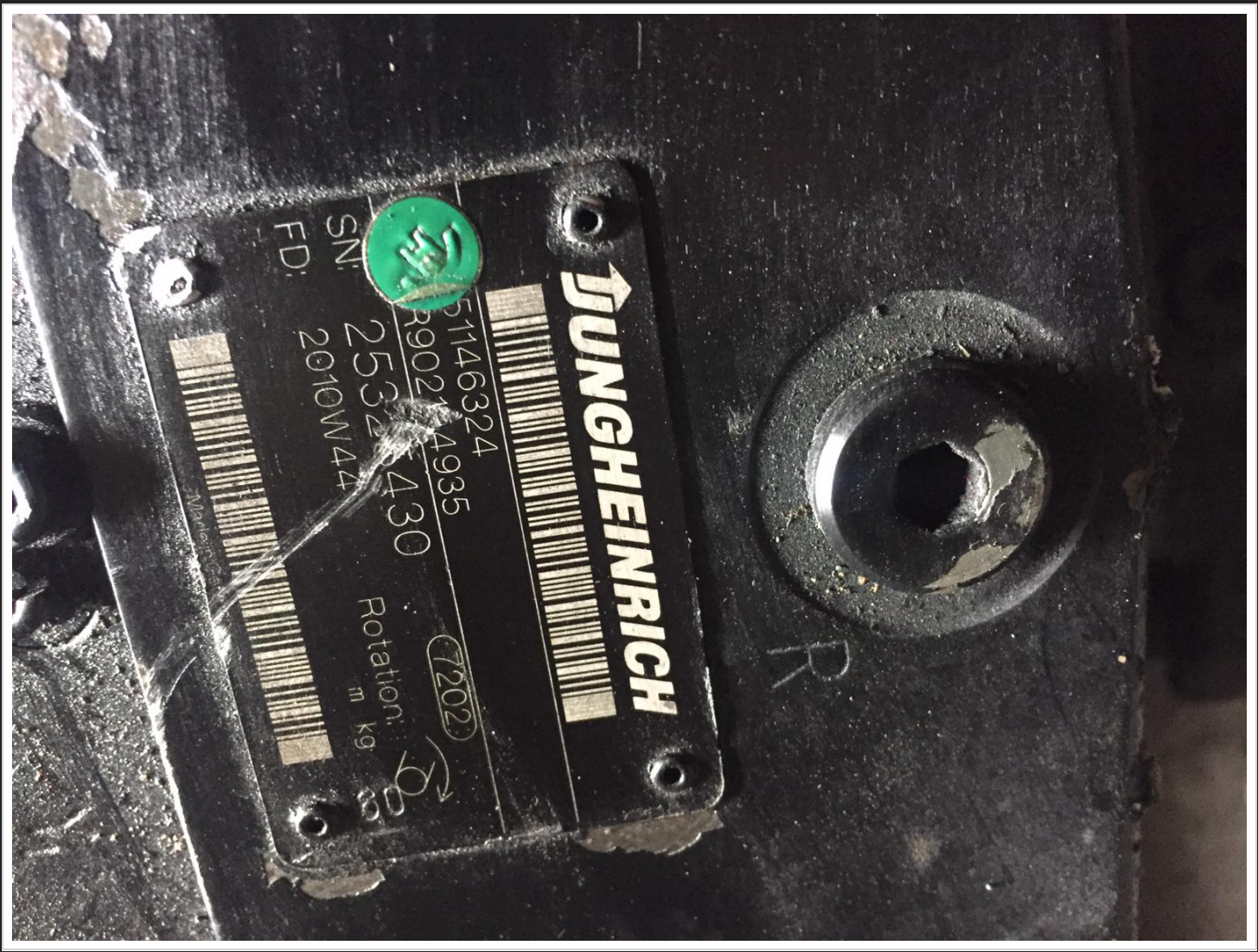
Website: <http://stivuitoare-lize.ro/>

Comuna Corunca, Str. Principala, nr. 412-413, judet Mures, Romania

Pompa hidraulica stivuitor JUNGHEINRICH SN: 51146324 (268)







JUNGHEINRICH

51146324

R90214935

430

Rotation:
m k9

2008

SN: 2532

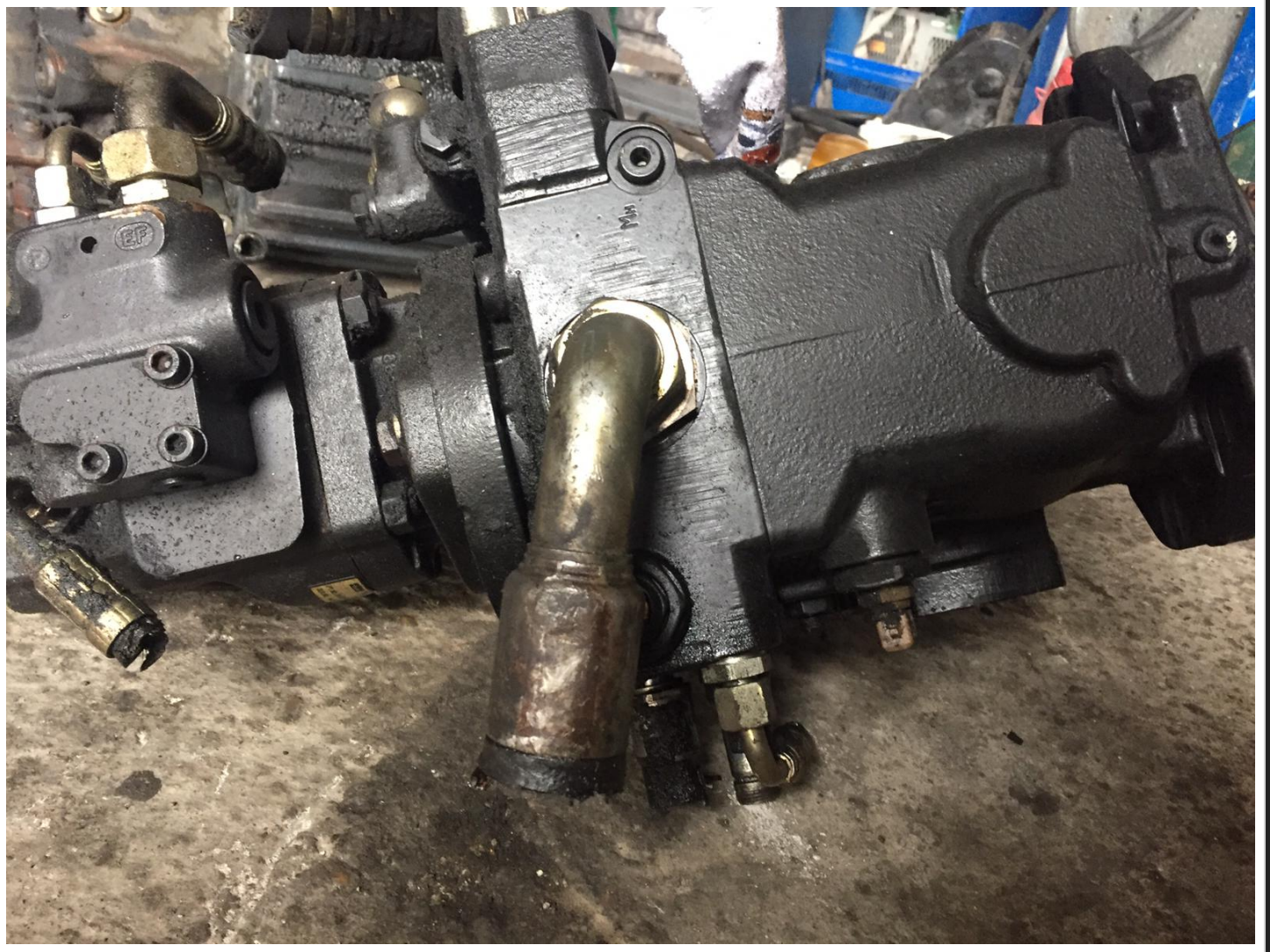
FD: 2010W44

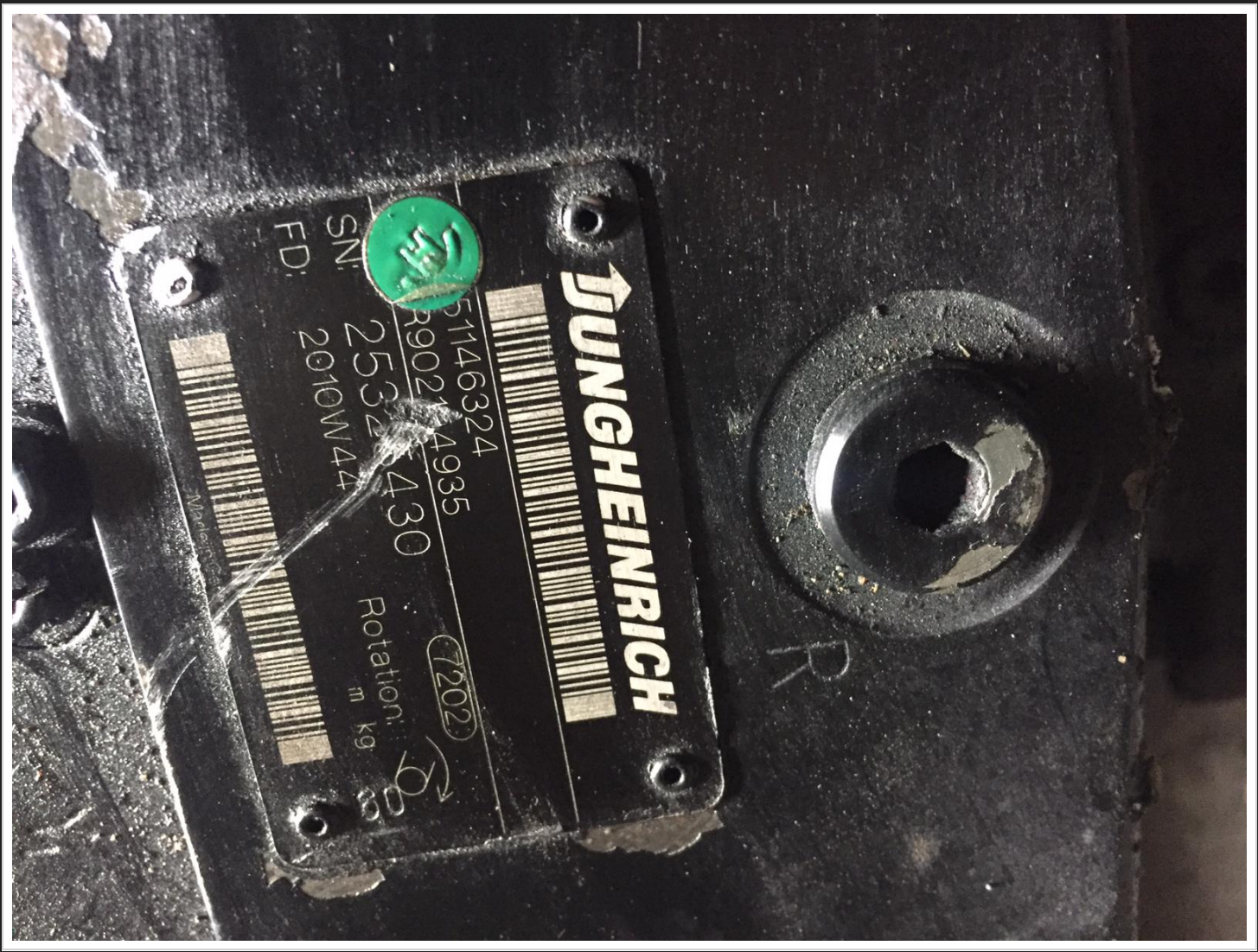


R









JUNGHEINRICH

51146324

R90214935

430

Rotation:
m k9

3000

SN:

2532430

FD:

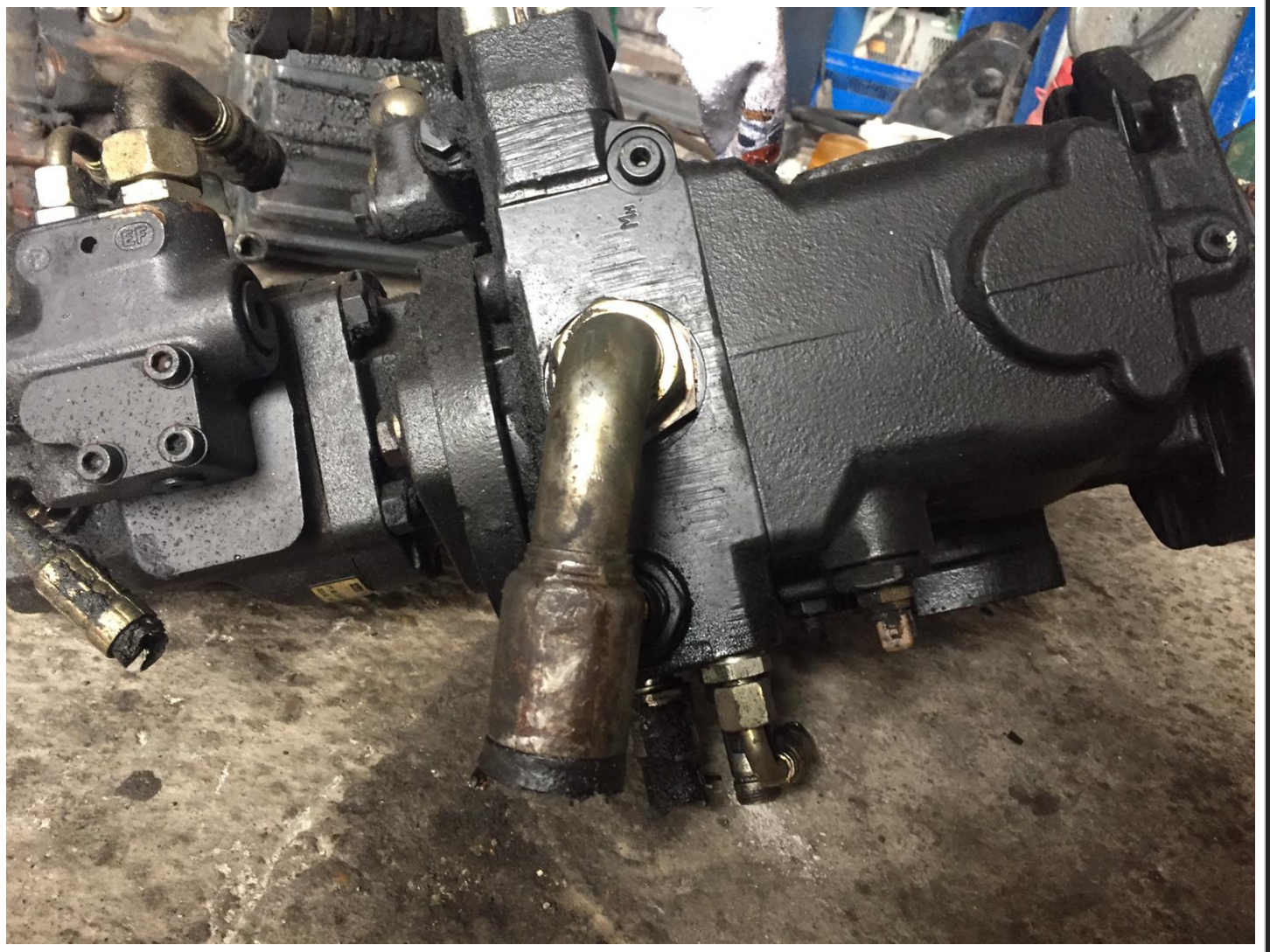
2010W44



R





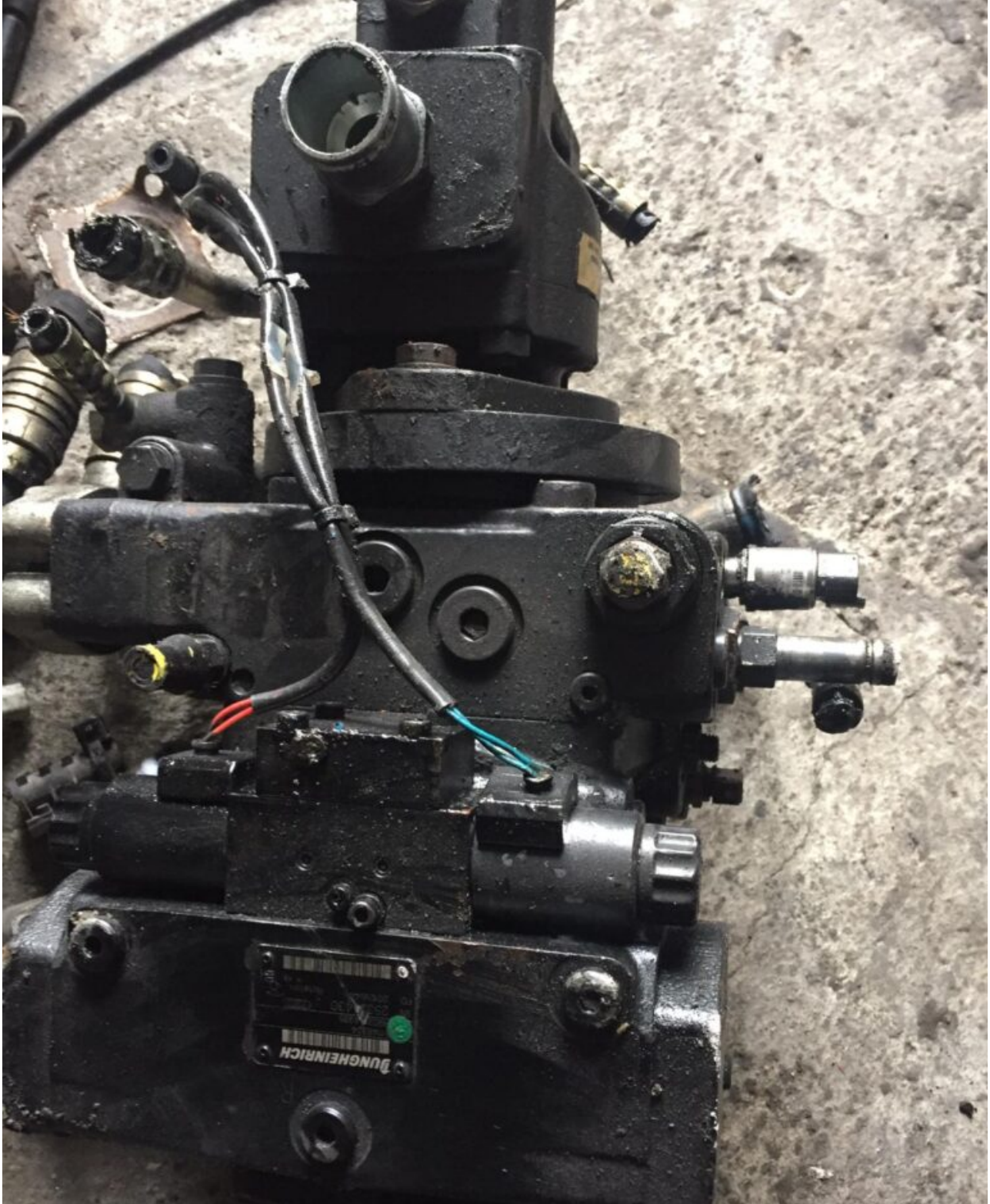


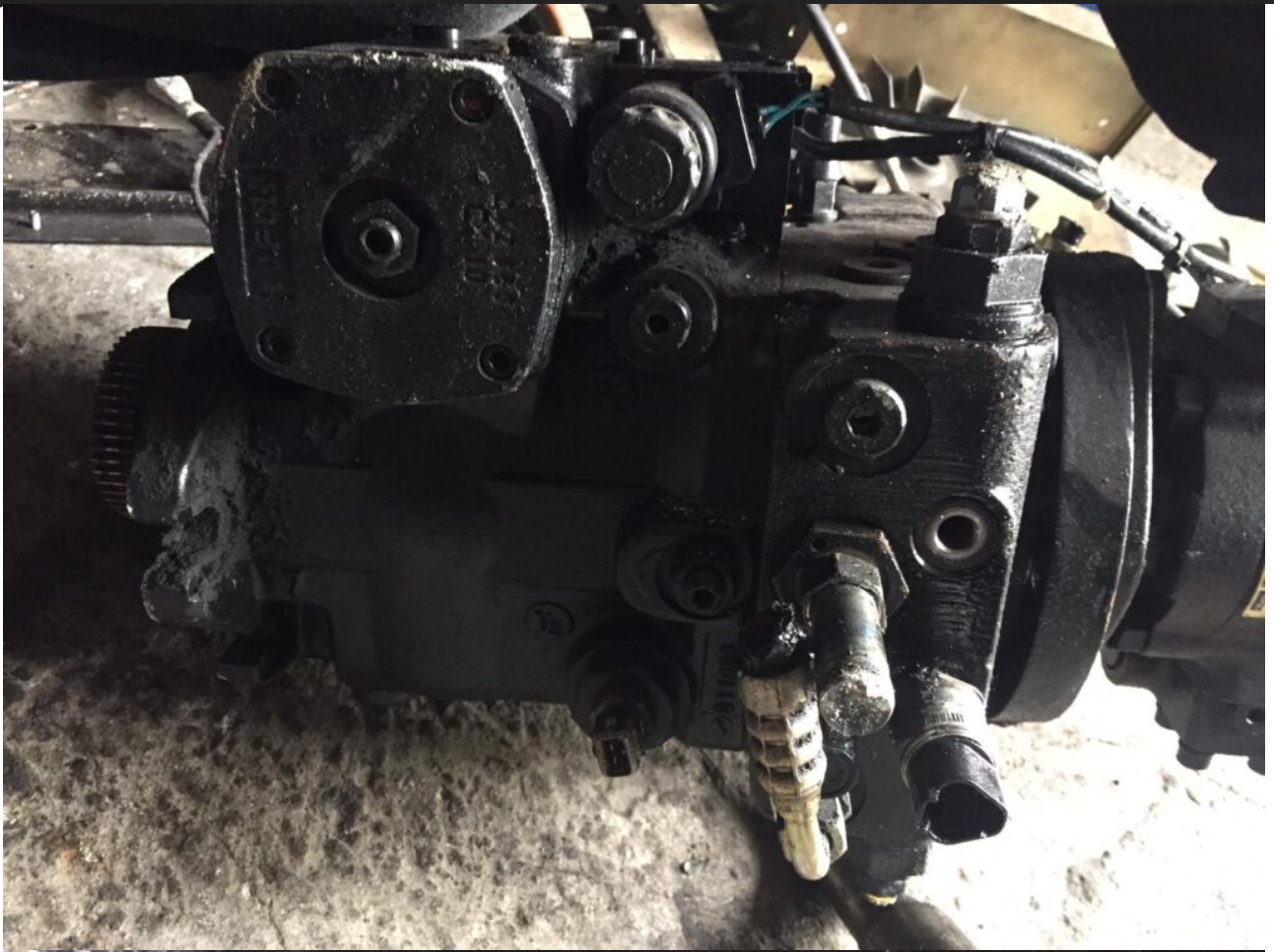
Pompa h



fara TVA



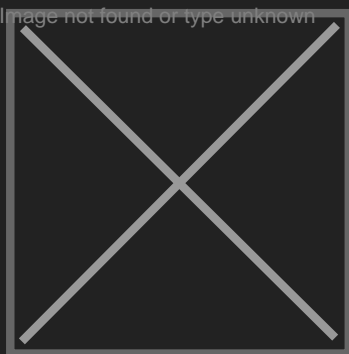




JUNGHEINRICH (AMEISE)/51146324

SPECIFICATIONS

Type of pump	plunger pump
Number of elements	1
Type of flange	type M
Center distance of mounting holes flange C1 (mm)	181
Center distance of mounting holes flange C2 (mm)	114.5
Total length of pump L1 (mm)	351
Neck diameter D2 (mm)	127
Type of shaft	type E
Distance from flange to end L2 (mm)	50
Diameter of shaft D3 (mm)	34.5
Number of splines	16
Thread type (on shaft) TA2	M12
Direction of rotation	clockwise
Thread type suction side of 1st element TA-Pa	M42
Thread type of connection pressure port 1st element TA-C0b	M12
Center distance between mounting holes C-C01b (mm)	27.8
Center distance between mounting holes C-C02b (mm)	57.2
Flow control valve present	YES
Biggest Thread type valve TA3	M16
Second Thread type valve TA4	M12



SC Stivuitoare-Lize SRL

Telefon: 0040 744 136 717

Email: office@stivuitoare-lize.ro

Website: <http://stivuitoare-lize.ro/>

Comuna Corunca, Str. Principala, nr. 412-413, judet Mures, Romania