



SC Stivuitoare-Lize SRL

Telefon: 0040 744 136 717

Email: office@stivuitoare-lize.ro

Website: <http://stivuitoare-lize.ro/>

Comuna Corunca, Str. Principala, nr. 412-413, judet Mures, Romania

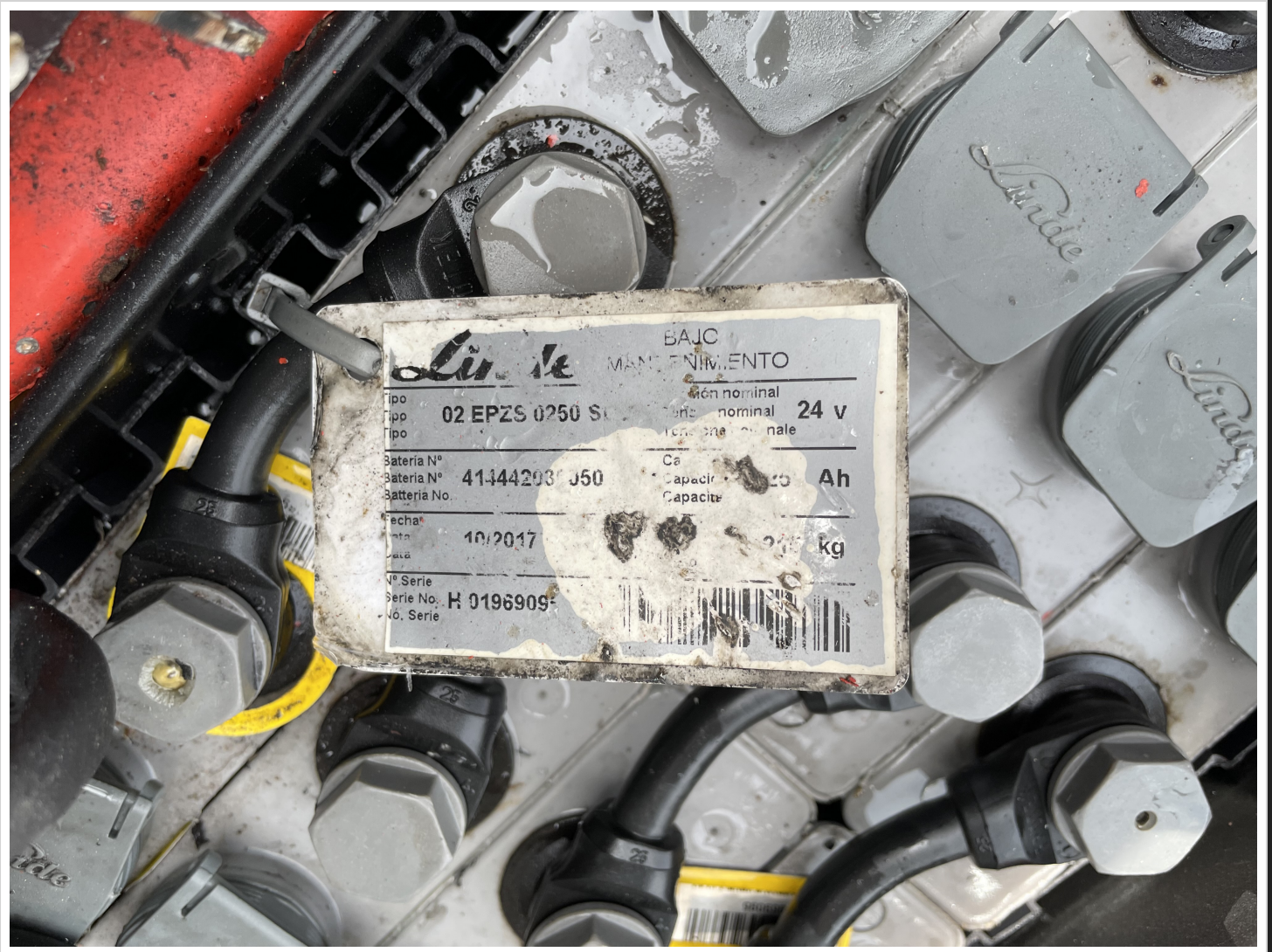
Transpaleta electrica LINDE L16, An 2015, 1.6 tone, ORE 5900











Lindbe BAJC
 MANTENIMIENTO

Tipo 02 EP2S 0250 S Tensión nominal 24 v
 Tipo Tensión nominal

Bateria Nº 41444203 J50 Capacidad 25 Ah
 Bateria No. Capacidad

Fecha 10/2017 Peso 24 kg

Nº Serie
 Serie No. H 0196909
 No. Serie





Linde Material Handling D - Aschaffenburg

Type - Modelle - Typ / Serial no. - No. de série - Serien Nr. / Year - Année - Baujahr
1 T6 / W41152F11618 / 2015

Rated capacity / Capacité nominale / Tragspanne
1600 kg

Battery voltage / Tension batterie / Batteriespannung
24 V

max. 240 kg
min. 150 kg

max. Batteriegewicht / Masse batterie / Battery mass
240 kg

275 kg

Unladen mass / Masse à vide / Leergewicht



Waste Material Handling
1.15 / WASTE MATERIAL HANDLING / 2014
1800 kg / 270 kg
24 V / 200 kg
200 kg









Transpaleta electrica LINDE L16, An 2015, 1.6 tone, ORE 5900

Marca :

LINDE

An fabricatie :

2015

Combustibil :

ELECTRIC

Capacitate de ridicare :

1.6 tone

Ore de functionare :

5900



tor





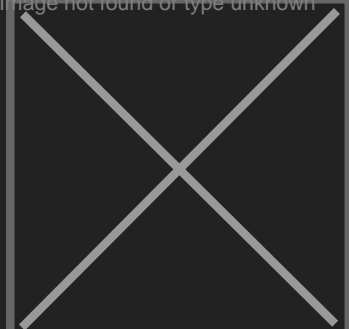


Stivuitoare-Lize Srl





Image not found or type unknown



SC Stivuitoare-Lize SRL

Telefon: 0040 744 136 717

Email: office@stivuitoare-lize.ro

Website: <http://stivuitoare-lize.ro/>

Comuna Corunca, Str. Principala, nr. 412-413, judet Mures, Romania