

SC Stivuitoare-Lize SRL

Telefon: 0040 744 136 717

Email: office@stivuitoare-lize.ro

Website: <http://stivuitoare-lize.ro/>

Comuna Corunca, Str. Principala, nr. 412-413, judet Mures, Romania

Jante(anvelope 7.00-12)stivuator-motostivuator si electrostivuator 2027



2027

2027







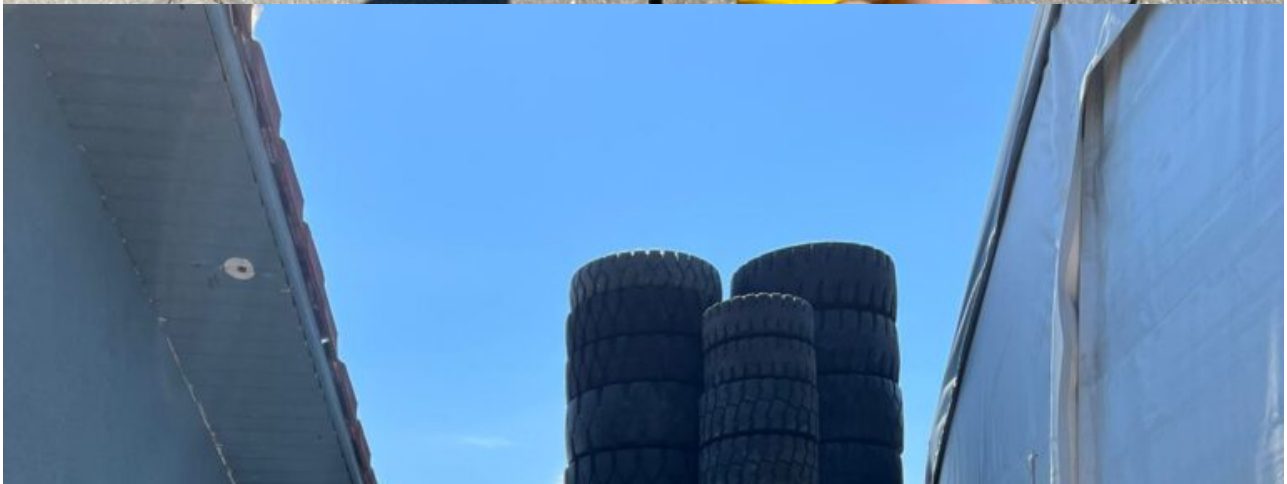




Jante (anvelope 7.00-12)stivvitor-motostivvitor si electrostivvitor Cod intern 2027 Pentru anvelope 7.00-12 Pret: 150€ fara TVA Se emite factura



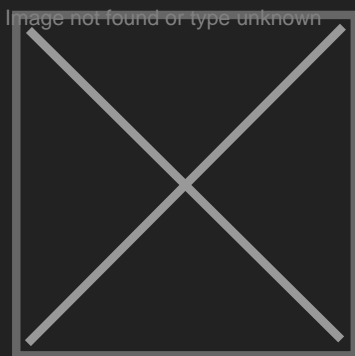






Rim width	Rim diameter	Tyre size	Centre hole	Pitch circle	Number of holes	Diameter of stud holes	Flange position	Used for
B1	D1		D2 mm	c mm	G	mm		
2.50	4	4.00-4	52	68	5	8,0	Half	Komatsu – Pimespo – OM
3.00	8	4.00-8	85	130	5	19,0	Half	Clark
		5.00-8	110	140	5	18,5	Half	Hyster
		125/75-8	86	114	6	15,0	Half	Toyota
		15x4.5-8	100	125	6	16,0	Half	Various
			110	148	6	15,0	Half	Various
4.33	8	16x6-8	95	135	5	17,5	124	Various
		150/75-8	110	145	5	18,5	Half	Hyster
		18x7-8	110	147	5	17,5	122	Various
		180/70-8	90	130	6	17,5	89	Various
			96	136	6	17,5	121	TCM

Rim width	Rim diameter	Tyre sizes			
B1	D1				
3.00	8	4.00-8	5.00-8	125/75-8	15x4.5-8
3.25	8	4.00-8	5.00-8	15x4.5-8	
3.75	8	4.00-8	5.00-8		
4.33	8	16x6-8	150/75-8	18x7-8	180/70-8
7.00	8	18x9-8			
4.00	9	6.00-9	140/55-9		
6.00	9	21x8-9	200/75-9		
5.00	10	6.50-10	7.50-10	180/60-10	
6.50	10	23x9-10	225/75-10	200/50-10	
3.00	12	4.50-12			
5.00	12	7.00-12	5.70-12		
8.00	12	27x10-12	23x10-12		
3.75	13	25x6	23x5		
4.50	15	5.50-15	6.00-15		
5.50	15	7.00-15			
6.00	15	7.50-15	7.00-15		
6.50	15	200-15	7.50-15	8.25-15	
7.00	15	250-15	28x9-15	8.15-15	225/75-15
7.50	15	250-15	10.00-15		
8.00	15	300-15			
9.75	15	355/65-15	28x12.5-15	355/45-15	
6.00	16	7.50-16			
6.50	20	8.25-20	9.00-20		
7.00	20	9.00-20	10.00-20		
7.50	20	10.00-20	11.00-20		
8.00	20	10.00-20	11.00-20	12.00-20	
8.50	20	12.00-20			
10.00	20	12.00-20			
8.50	24	12.00-24			
10.00	24	14.00-24			



SC Stivuitoare-Lize SRL

Telefon: 0040 744 136 717

Email: office@stivuitoare-lize.ro

Website: <http://stivuitoare-lize.ro/>

Comuna Corunca, Str. Principala, nr. 412-413, judet Mures, Romania