



SC Stivuitoare-Lize SRL

Telefon: 0040 744 136 717

Email: office@stivuitoare-lize.ro

Website: <http://stivuitoare-lize.ro/>

Comuna Corunca, Str. Principala, nr. 412-413, judet Mures, Romania

**Grup pompe hidraulice stivuator Still SN: 0009810878
(437)**



STILL
type **0009810878**
IP 43 Isol. Kl. "F" 2,0kW 24Vdc
Bar code

Motor Code
C1620S1060
2.0 KW
S2= 2 m
IP54

0S02293512

Rexroth



Rexroth

W130001976	Made in ITALY
0009810878	
17823150002A	02293512
R932008940	20130111

Bosch Rexroth Oil Control S.p.A.







— SPECIFICATIONS

Type of pump group TY-PG	motor-pump-reservoir
Length L1 (mm)	238
Width B1 (mm)	180
Height H1 (mm)	177
Function	lifting
AC / DC	direct current
Minimum voltage U1 (V)	24
Power (kW)	2
Cooling fan present	NO
Direction of rotation motor	clockwise

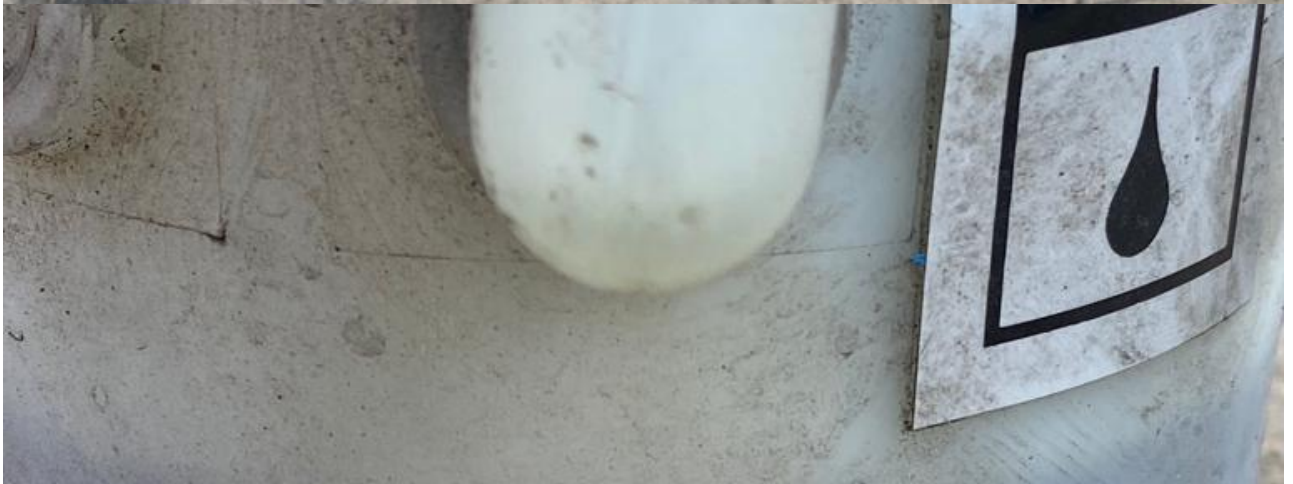
Brief operation (min)	2
Intermittent operation (%)	5
Starter relay present	NO
Length L2 (mm)	125
Diameter reservoir D5 (mm)	127
Position	vertical
Decompression	electrical
Tension of the valve U4 (V)	24
Type of valve TY-VA	normally closed valve
Type of cilinder TY-Cl	single acting (one gate)

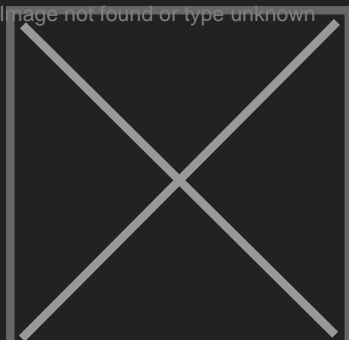
Grup pompe hidraulice stivuator Still Cod piesa 0009810878 Pret: 600€ fara TVA Se emite factura

SPECIFICATIONS

Type of pump group TY-PG	motor-pump-reservoir	Brief operation (min)	2
Length L1 (mm)	238	Intermittent operation (%)	5
Width B1 (mm)	180	Starter relay present	NO
Height H1 (mm)	177	Length L2 (mm)	125
Function	lifting	Diameter reservoir D5 (mm)	127
AC / DC	direct current	Position	vertical
Minimum voltage U1 (V)	24	Decompression	electrical
Power (kW)	2	Tension of the valve U4 (V)	24
Cooling fan present	NO	Type of valve TY-VA	normally closed valve
Direction of rotation motor	clockwise	Type of cilinder TY-Cl	single acting (one gate)







SC Stivuitoare-Lize SRL

Telefon: 0040 744 136 717

Email: office@stivuitoare-lize.ro

Website: <http://stivuitoare-lize.ro/>

Comuna Corunca, Str. Principala, nr. 412-413, judet Mures, Romania