

SC Stivuitoare-Lize SRL

Telefon: 0040 744 136 717

Email: office@stivuitoare-lize.ro

Website: <http://stivuitoare-lize.ro/>

Comuna Corunca, Str. Principala, nr. 412-413, judet Mures, Romania

**Motor electric stivuator 48V, 230A Juli, 9kw SN:
1002040 (438)**



JULIUS	
NO. 10	537 025
NO. 11	537 025
NO. 12	537 025
NO. 13	537 025
NO. 14	537 025
NO. 15	537 025
NO. 16	537 025
NO. 17	537 025
NO. 18	537 025
NO. 19	537 025
NO. 20	537 025
NO. 21	537 025
NO. 22	537 025
NO. 23	537 025
NO. 24	537 025
NO. 25	537 025
NO. 26	537 025
NO. 27	537 025
NO. 28	537 025
NO. 29	537 025
NO. 30	537 025
NO. 31	537 025
NO. 32	537 025
NO. 33	537 025
NO. 34	537 025
NO. 35	537 025
NO. 36	537 025
NO. 37	537 025
NO. 38	537 025
NO. 39	537 025
NO. 40	537 025
NO. 41	537 025
NO. 42	537 025
NO. 43	537 025
NO. 44	537 025
NO. 45	537 025
NO. 46	537 025
NO. 47	537 025
NO. 48	537 025
NO. 49	537 025
NO. 50	537 025
NO. 51	537 025
NO. 52	537 025
NO. 53	537 025
NO. 54	537 025
NO. 55	537 025
NO. 56	537 025
NO. 57	537 025
NO. 58	537 025
NO. 59	537 025
NO. 60	537 025
NO. 61	537 025
NO. 62	537 025
NO. 63	537 025
NO. 64	537 025
NO. 65	537 025
NO. 66	537 025
NO. 67	537 025
NO. 68	537 025
NO. 69	537 025
NO. 70	537 025
NO. 71	537 025
NO. 72	537 025
NO. 73	537 025
NO. 74	537 025
NO. 75	537 025
NO. 76	537 025
NO. 77	537 025
NO. 78	537 025
NO. 79	537 025
NO. 80	537 025
NO. 81	537 025
NO. 82	537 025
NO. 83	537 025
NO. 84	537 025
NO. 85	537 025
NO. 86	537 025
NO. 87	537 025
NO. 88	537 025
NO. 89	537 025
NO. 90	537 025
NO. 91	537 025
NO. 92	537 025
NO. 93	537 025
NO. 94	537 025
NO. 95	537 025
NO. 96	537 025
NO. 97	537 025
NO. 98	537 025
NO. 99	537 025
NO. 100	537 025

438

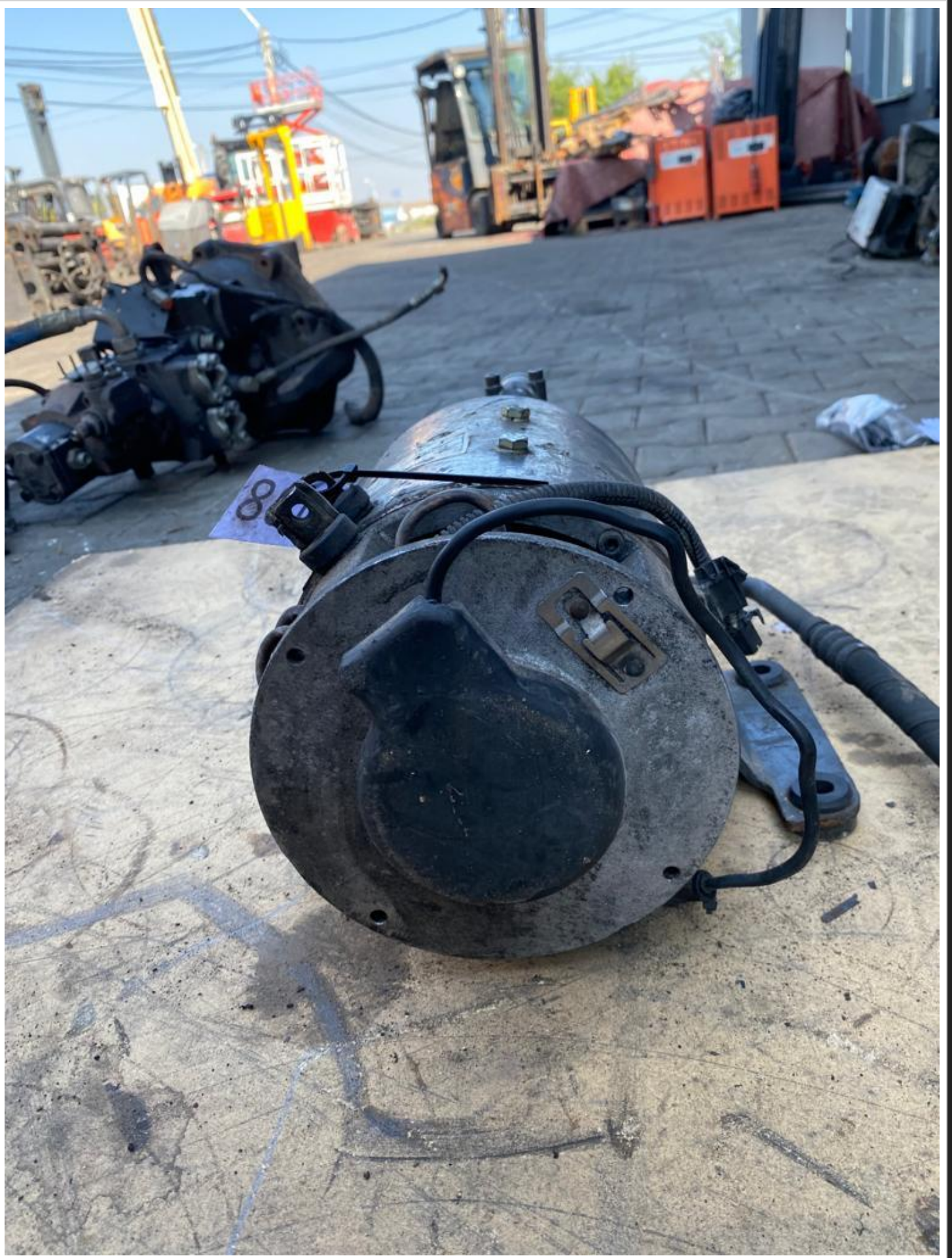




JULI		527 835	
Typ GP 116 -14/7.9		Id.-Nr. 1002040	
48 V	230 A	2900 min ⁻¹	IP 00/22
9.0 kW	15%	Isol. Kl. B/F	
Erreg.	V	A	m ³ h ⁻¹ mbar
DVE0525	5	Fab. Nr. 00031635	









SUBC-A EOT 202
Typ. GP 116-147.5 12-16 100000
210 A 2000 RPM 1/2 HP
9.0 AMP @ 18%
Eject
DUCAS

438

Motor electric stivuator 48V, 230A Juli, 9kw SN: 1002040 Cod piesa 438 Pret: 2300€ fara TVA Se emite factura



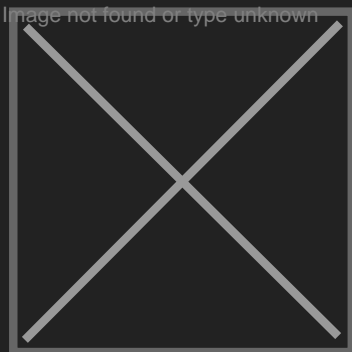




— SPECIFICATIONS —

Total length (mm)	300
Length of the armature housing (mm)	192
Diameter of the armature housing (mm)	186
Number of terminal clamps	2
Front flange	YES
Type shaft front	A
Type shaft rear	H
Number of plugs	2

Cooling fan	none
Minimum voltage U1 (V)	48
Current (ampere) (A)	230
Revolutions/Minute (tr/min)	2900
Power (kW)	9
Motor type	pump motor
Sort of electric motor	direct current



SC Stivuitoare-Lize SRL

Telefon: 0040 744 136 717

Email: office@stivuitoare-lize.ro

Website: <http://stivuitoare-lize.ro/>

Comuna Corunca, Str. Principala, nr. 412-413, judet Mures, Romania