

SC Stivuitoare-Lize SRL

Telefon: 0040 744 136 717

Email: office@stivuitoare-lize.ro

Website: <http://stivuitoare-lize.ro/>

Comuna Corunca, Str. Principala, nr. 412-413, judet Mures, Romania

**Distribuitor hidraulic Parker stivuator SN:
7029520011 (1590)**





1390







— SPECIFICATIONS

Type of pump	gearpump
Number of elements	2
Type of flange	type A
Diameter of flange mounting holes D1 (mm)	14.3
Center distance of mounting holes flange C1 (mm)	146
Total length of pump L1 (mm)	256.8
Neck diameter D2 (mm)	101.6
Type of shaft	type D
Distance from flange to end L2 (mm)	41.2
Diameter of shaft D3 (mm)	21.8
Number of splines	13
Direction of rotation	clockwise
Position of suction port 1st element, only for pump type T POS-C01	side

Type of connections suction port 1st element, only for pump type T TY-C0a	type E
Thread type suction side of 1st element TA-Pa	1 5/16 UNF
Position of suction port 2nd element, only for pump type T POS-C03	side
Type of connections suction port 2nd element, only for pump type T TY-C0c	type E
Thread type suction side of 2nd element TA-Pc	1 1/16 UNF
Position of pressure port 2nd element, only for pump type T POS-C04	side
Type of connections pressure port 2nd element, only for pump type T TY-C0d	type E
Thread type pressure side of 2nd element TA-Pd	7/8 UNF
Flow control valve present	YES
Biggest Thread type valve TA3	7/16 UNF
Material of the housing	metal

SPECIFICATIONS

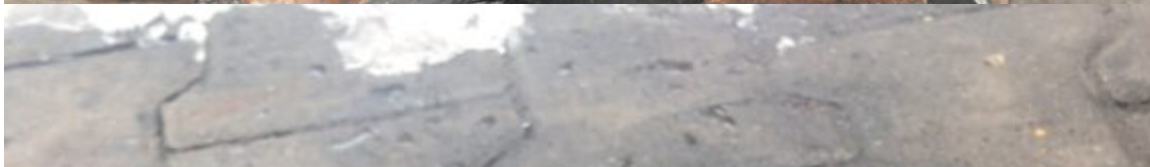
Distr

Type of pump	gearpump
Number of elements	2
Type of flange	type A
Diameter of flange mounting holes D1 (mm)	14.3
Center distance of mounting holes flange C1 (mm)	146
Total length of pump L1 (mm)	256.8
Neck diameter D2 (mm)	101.6
Type of shaft	type D
Distance from flange to end L2 (mm)	41.2
Diameter of shaft D3 (mm)	21.8
Number of splines	13
Direction of rotation	clockwise
Position of suction port 1st element, only for pump type T POS-C01	side

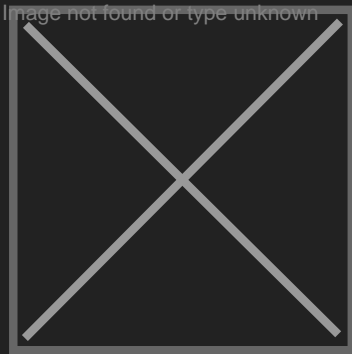
Type of connections suction port 1st element, only for pump type T TY-C0a	type E
Thread type suction side of 1st element TA-Pa	1 5/16 UNF
Position of suction port 2nd element, only for pump type T POS-C03	side
Type of connections suction port 2nd element, only for pump type T TY-C0c	type E
Thread type suction side of 2nd element TA-Pc	1 1/16 UNF
Position of pressure port 2nd element, only for pump type T POS-C04	side
Type of connections pressure port 2nd element, only for pump type T TY-C0d	type E
Thread type pressure side of 2nd element TA-Pd	7/8 UNF
Flow control valve present	YES
Biggest Thread type valve TA3	7/16 UNF
Material of the housing	metal

ra

TVA







SC Stivuitoare-Lize SRL

Telefon: 0040 744 136 717

Email: office@stivuitoare-lize.ro

Website: <http://stivuitoare-lize.ro/>

Comuna Corunca, Str. Principala, nr. 412-413, judet Mures, Romania