

SC Stivuitoare-Lize SRL

Telefon: 0040 744 136 717

Email: office@stivuitoare-lize.ro

Website: <http://stivuitoare-lize.ro/>

Comuna Corunca, Str. Principala, nr. 412-413, judet Mures, Romania

Distribuitor hidraulic Rexroth stivuator Jungheinrich

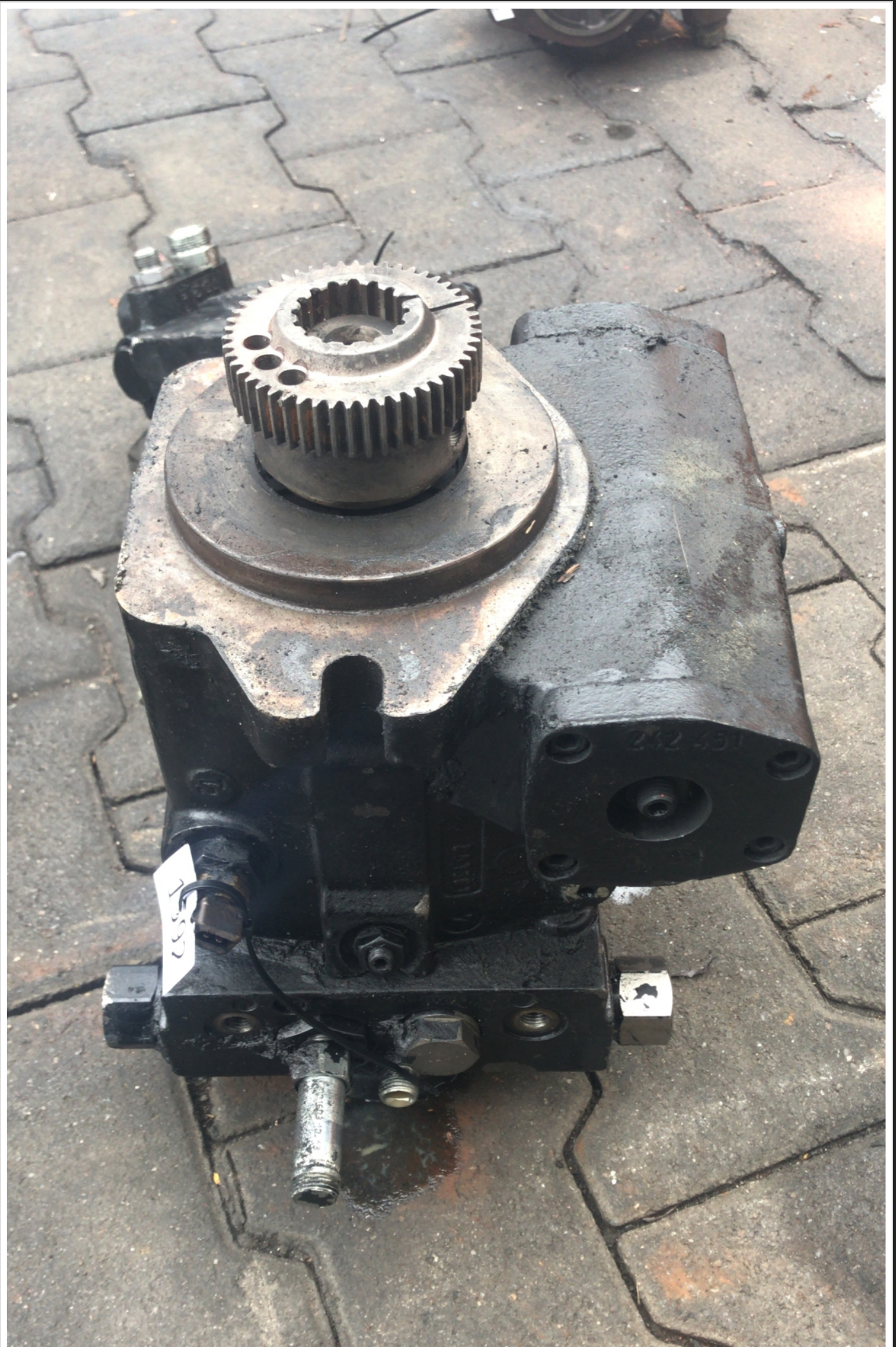
SN: 51112733 (1592)









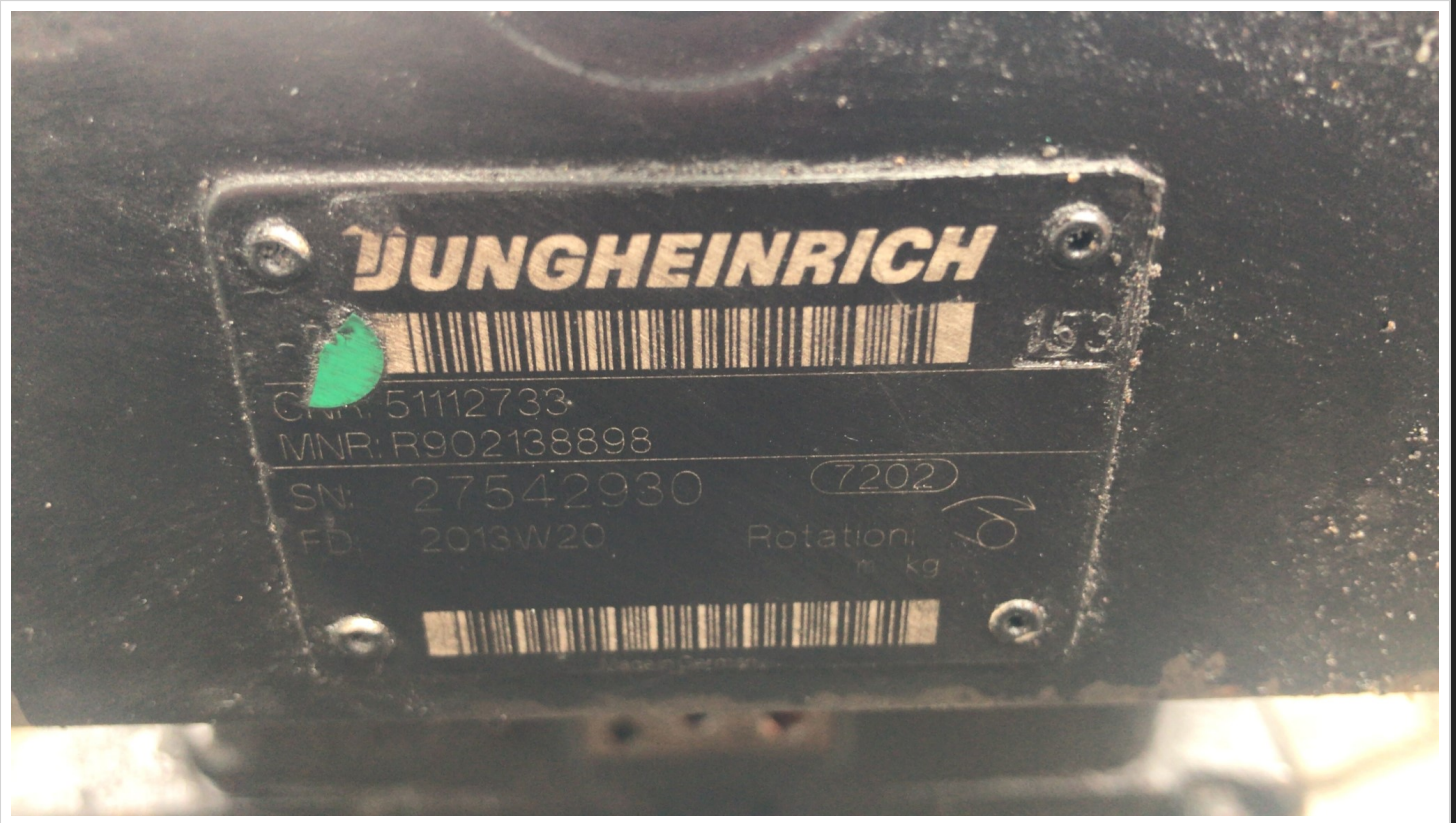




1592

— SPECIFICATIONS —

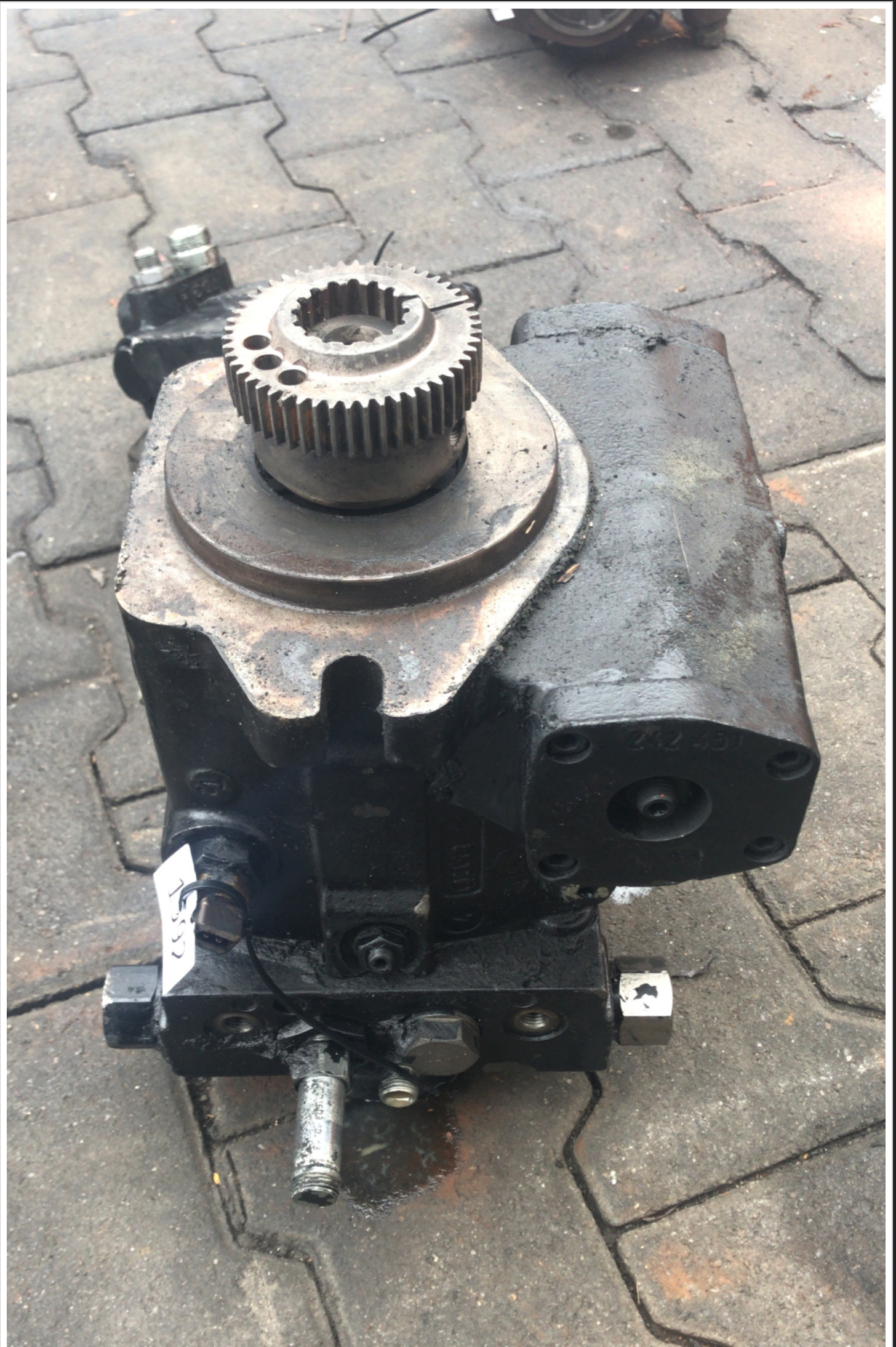
Type of pump	plunger pump	Diameter of shaft D3 (mm)	34.6
Number of elements	1	Number of splines	16
Type of flange	type B	Thread type (on shaft) TA2	M12
Center distance of mounting holes flange C1 (mm)	181	Direction of rotation	clockwise
Total length of pump L1 (mm)	322	Thread type suction side of 1st element TA-Pa	M33
Neck diameter D2 (mm)	127	Thread type pressure side of 1st element TA-Pb	M14
Type of shaft	type E	Flow control valve present	YES
Distance from flange to end L2 (mm)	51	Biggest Thread type valve TA3	M16
		Material of the housing	metal











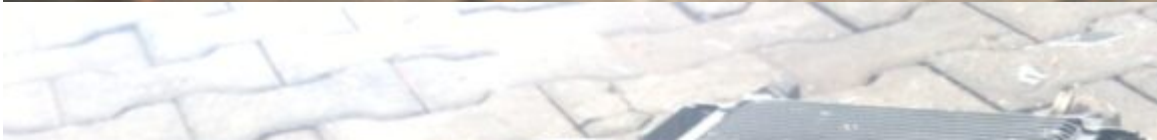


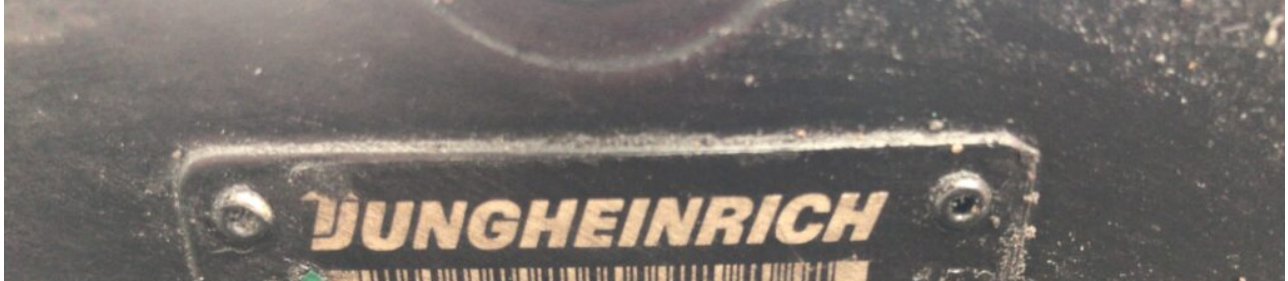
1592

Distribuitor hidraulic Rexroth stivuator Jungheinrich Cod intern: 1592 SN: 51112733 Se emite factura

Pret: 3.250€ fara TVA



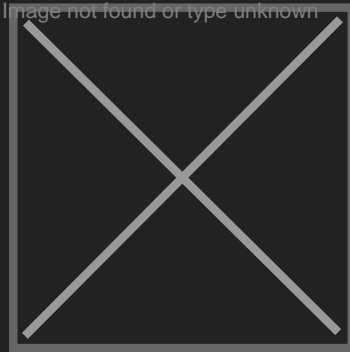




— SPECIFICATIONS

Type of pump	plunger pump
Number of elements	1
Type of flange	type B
Center distance of mounting holes flange C1 (mm)	181
Total length of pump L1 (mm)	322
Neck diameter D2 (mm)	127
Type of shaft	type E
Distance from flange to end L2 (mm)	51

Diameter of shaft D3 (mm)	34.6
Number of splines	16
Thread type (on shaft) TA2	M12
Direction of rotation	clockwise
Thread type suction side of 1st element TA-Pa	M33
Thread type pressure side of 1st element TA-Pb	M14
Flow control valve present	YES
Biggest Thread type valve TA3	M16
Material of the housing	metal



SC Stivuitoare-Lize SRL

Telefon: 0040 744 136 717

Email: office@stivuitoare-lize.ro

Website: <http://stivuitoare-lize.ro/>

Comuna Corunca, Str. Principala, nr. 412-413, judet Mures, Romania