



SC Stivuitoare-Lize SRL

Telefon: 0040 744 136 717

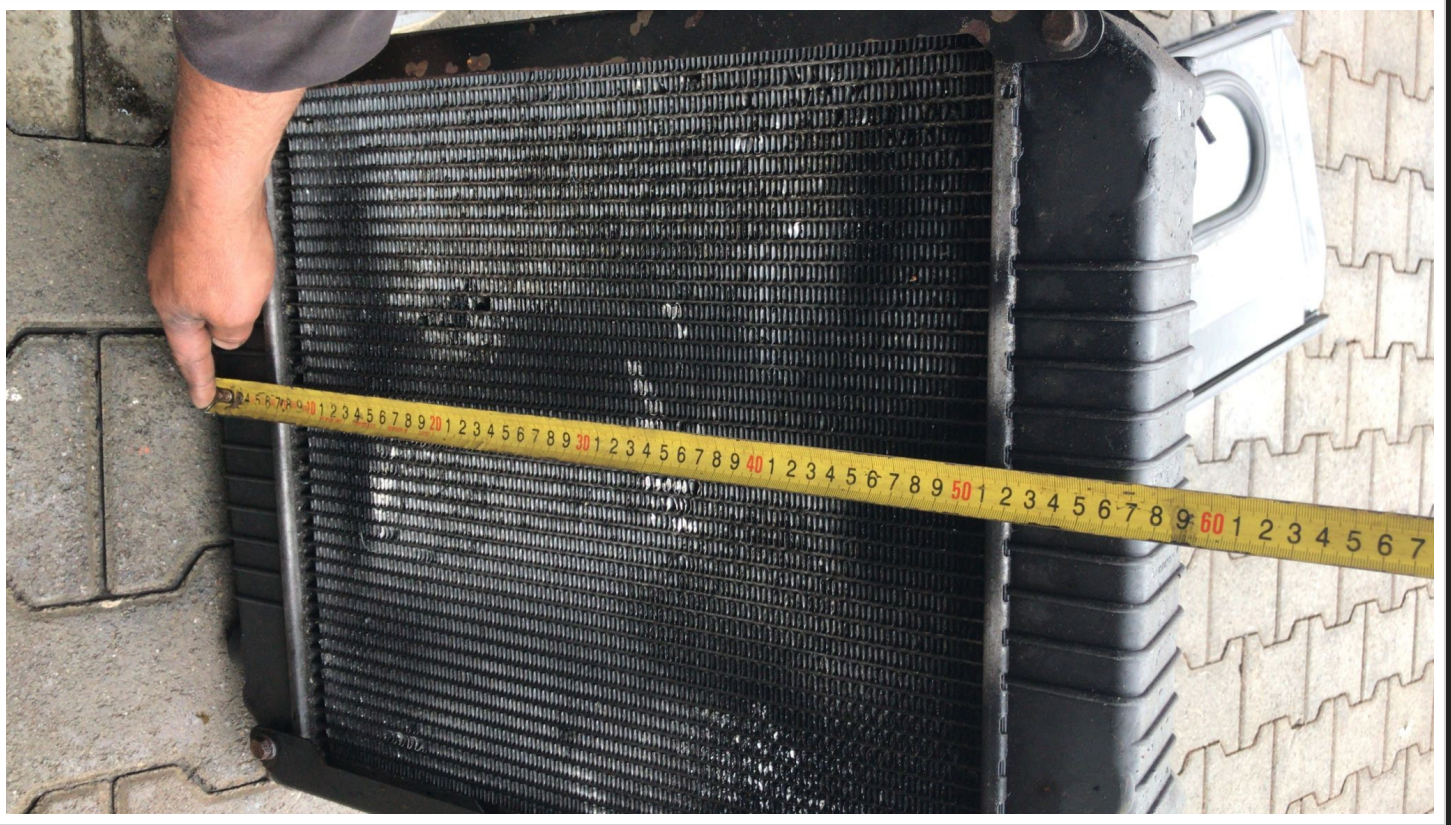
Email: office@stivuitoare-lize.ro

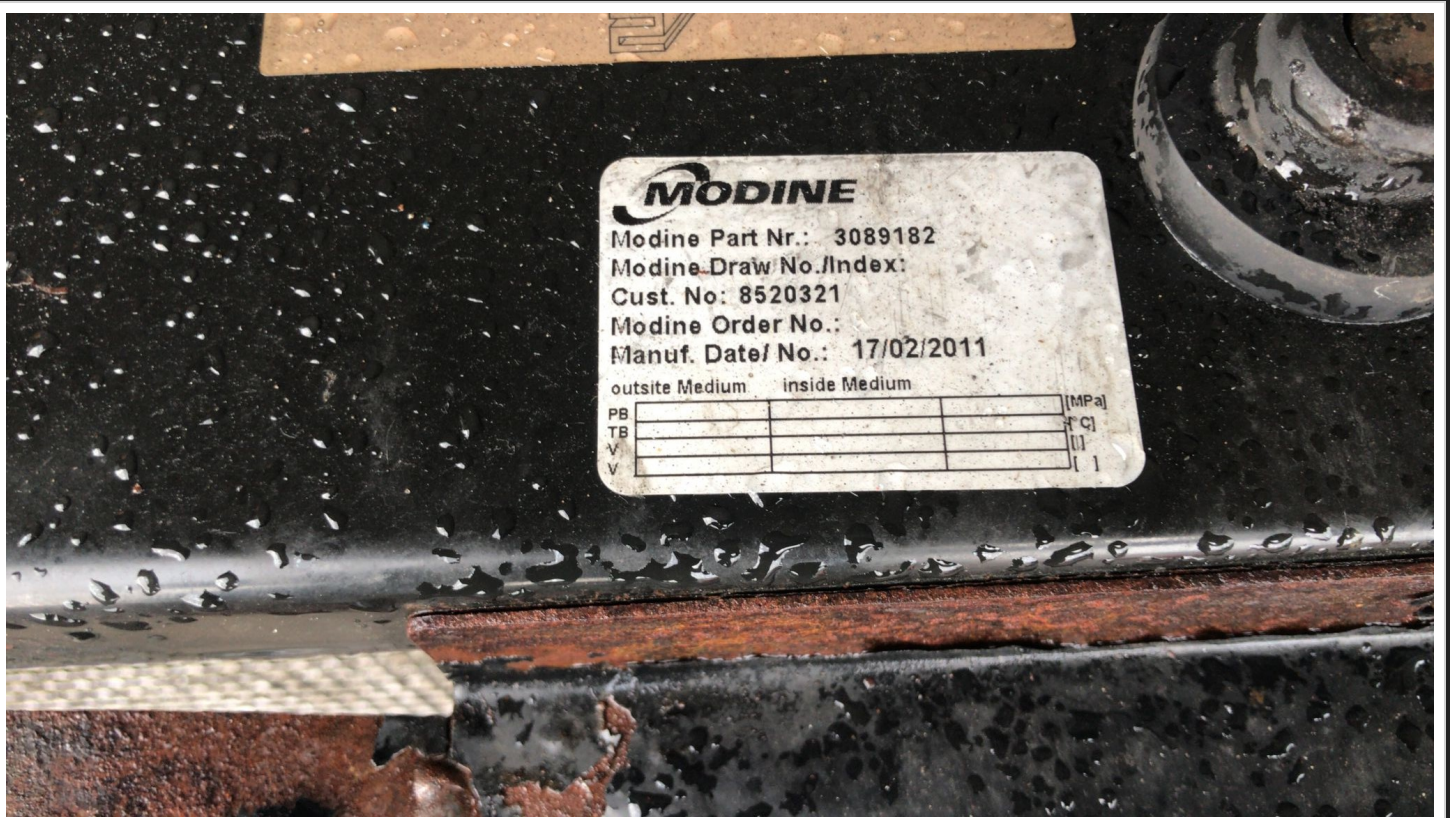
Website: <http://stivuitoare-lize.ro/>

Comuna Corunca, Str. Principala, nr. 412-413, judet Mures, Romania

**Radiator stivuator Yale-Hyster, An 2006-2016, 1.6-2
tone SN: 8520321-3089182 (1652)**









— SPECIFICATIONS

Radiator type	vertical	Height H1 (mm)	450
Position radiator cap	L2	Width B1 (mm)	80
Position of input	R	Length L2 (mm)	584
Diameter input D1 (mm)	35.5	Height H2 (mm)	485
Position of output	L	Width B2 (mm)	139
Outer diameter D2 (mm)	35.5	Position oil cooler	K2
Centre distance (mm)	617	Centre distance L4 (mm)	255
Position draincock	23	Thickness heat sink ass (mm)	56
Length L1 (mm)	575	Centre distance fins (mm)	10

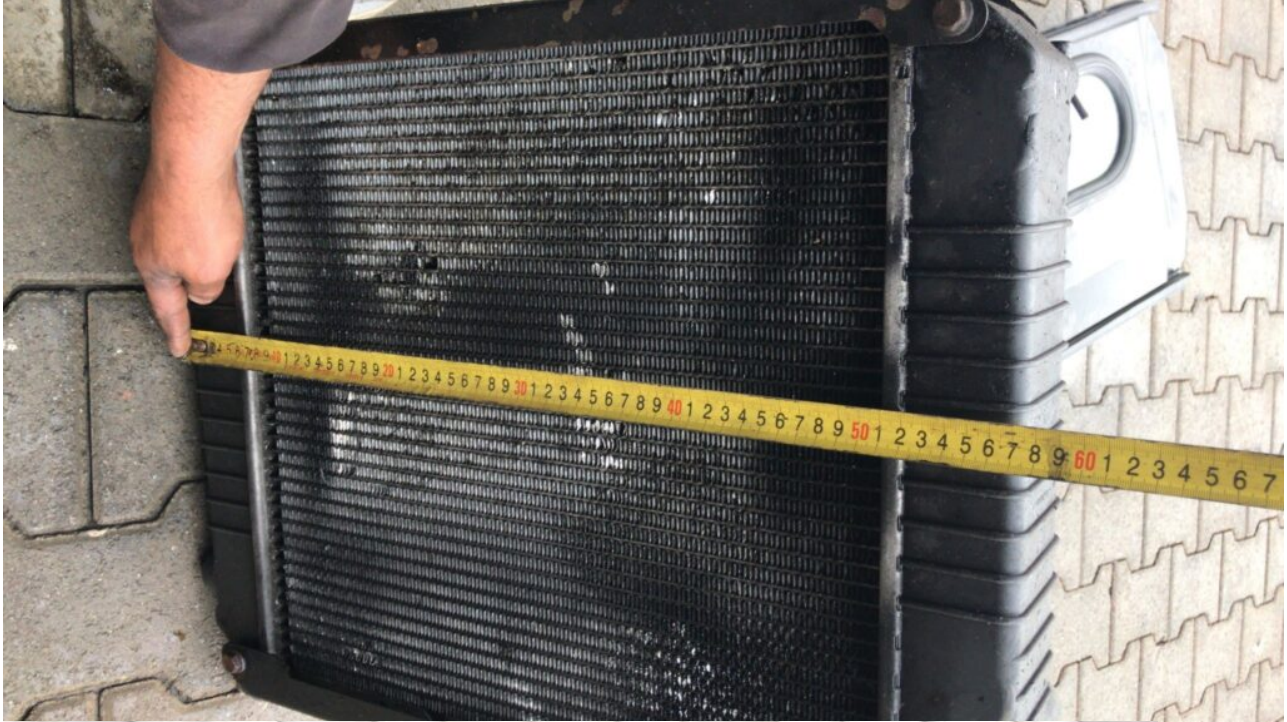
Radiator stivuitor Yale-Hyster, An 2006-2016, 1.6-2 tone Cod intern: 1652 SN: 8520321-3089182 Se emite factura Pret: 650€ fara TVA

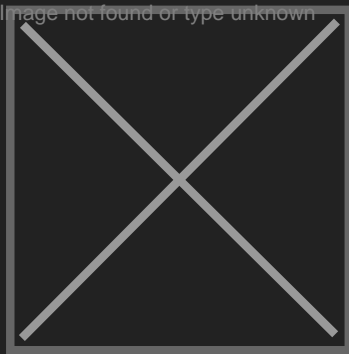
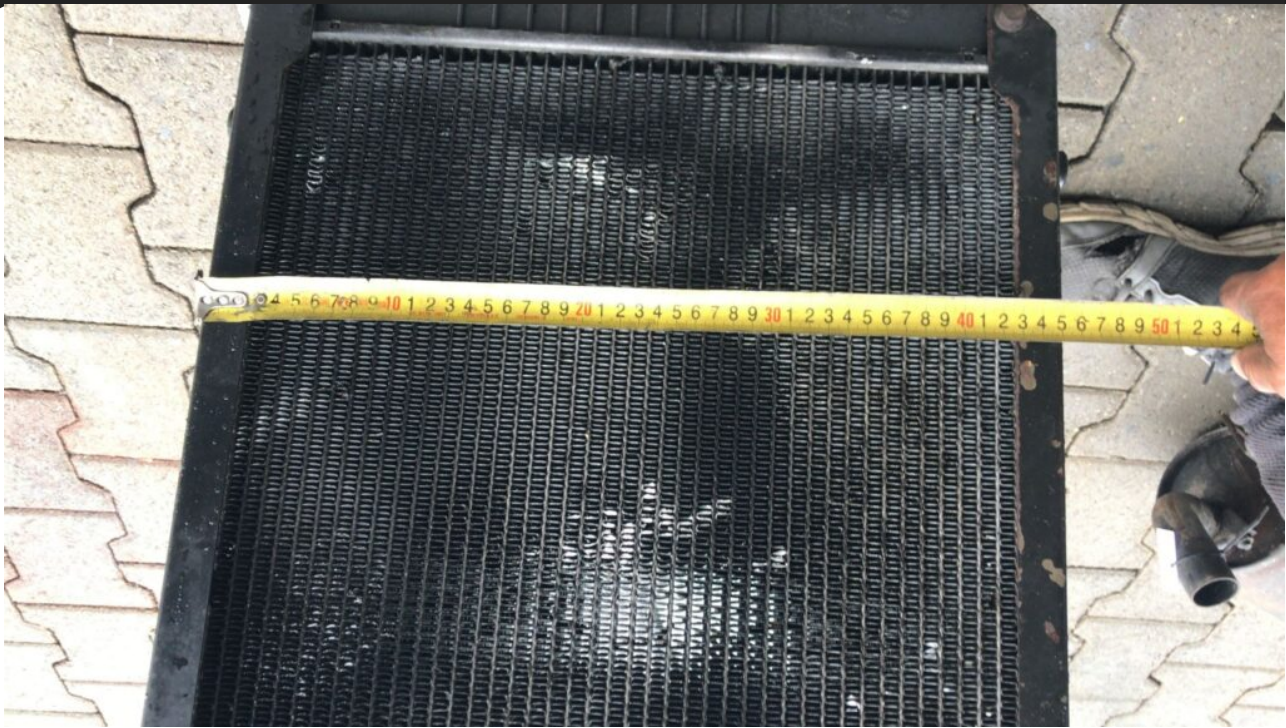
SPECIFICATIONS

Radiator type	vertical	Height H1 (mm)	450
Position radiator cap	L2	Width B1 (mm)	80
Position of input	R	Length L2 (mm)	584
Diameter input D1 (mm)	35.5	Height H2 (mm)	485
Position of output	L	Width B2 (mm)	139
Outer diameter D2 (mm)	35.5	Position oil cooler	K2
Centre distance (mm)	617	Centre distance L4 (mm)	255
Position draincock	23	Thickness heat sink ass (mm)	56
Length L1 (mm)	575	Centre distance fins (mm)	10



MODINE
 Modine Part Nr.: 3089182
 Modine Draw No./Index:
 Cust. No: 8520321
 Modine Order No.:
 Modine Date: 17/02/2011





SC Stivuitoare-Lize SRL

Telefon: 0040 744 136 717

Email: office@stivuitoare-lize.ro

Website: <http://stivuitoare-lize.ro/>

Comuna Corunca, Str. Principala, nr. 412-413, judet Mures, Romania