



SC Stivuitoare-Lize SRL

Telefon: 0040 744 136 717

Email: office@stivuitoare-lize.ro

Website: <http://stivuitoare-lize.ro/>

Comuna Corunca, Str. Principala, nr. 412-413, judet Mures, Romania

**Pompa hidraulica Rexroth stivuator SN: R902451639
(539, 1753)**





Rexroth
TR-15100-01-01
ICNR:
A 110V Q 25 FR1/52R
V25.11N00 S2131
MNR: R90245163 | FD: 11W26
SN: 1311520
ROTATION

Rexroth

TR-16159, B160

CNR:

A A10V 0 25 DER1/52R-

VXC11N00 -S2131

MNR: R902451639 | FD: 11W26

SN: 11311520

TR 1

$\omega = 25 \text{ cm}^3$ $n = 2600 \text{ min}^{-1}$

$D_p = 250 \text{ bar}$ $F_R = 25 \text{ bar}$ $F_S = 1 \text{ bar}$

ROTA-TION







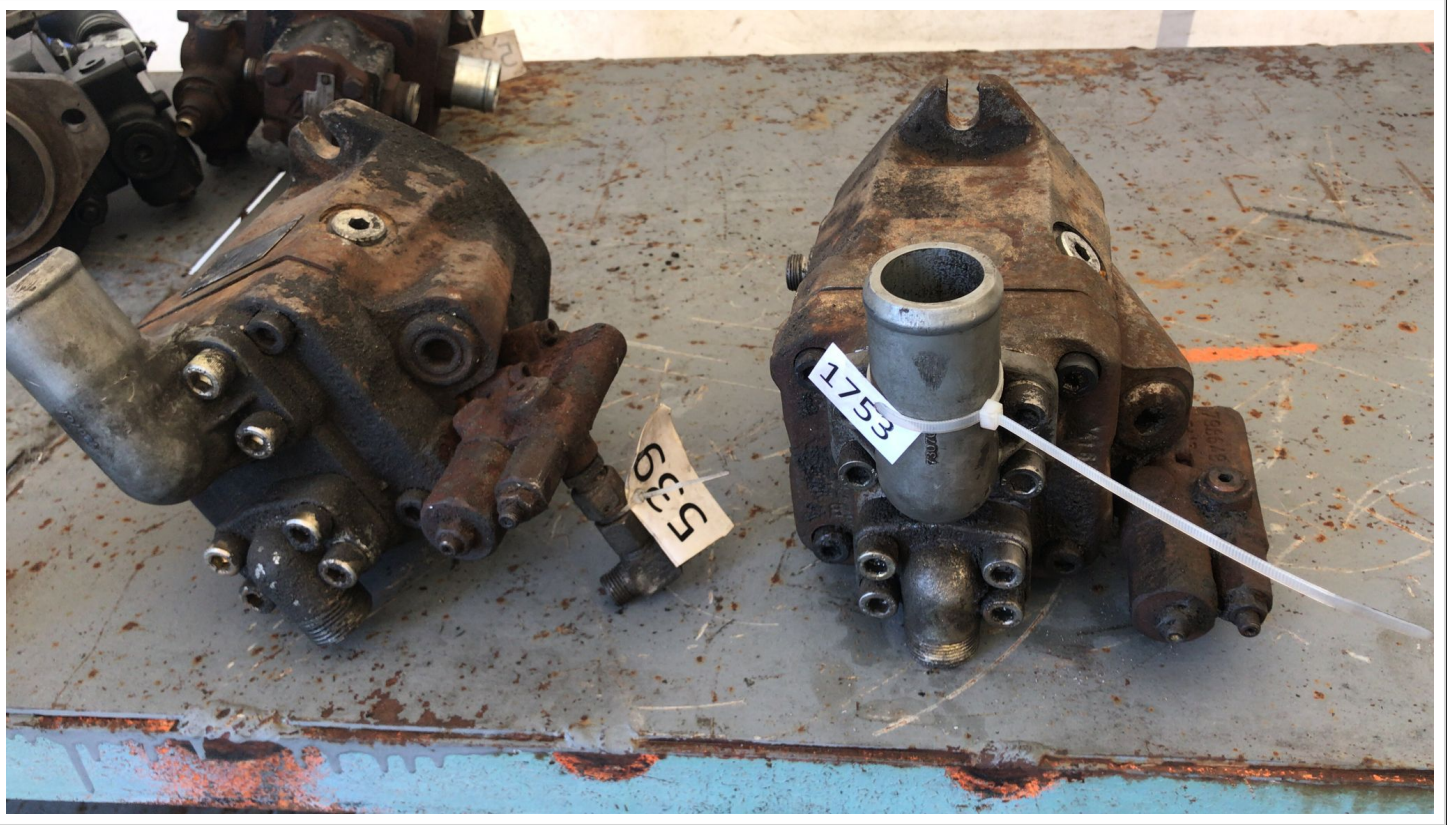
1753

5

7307

706610

67976



Grup pom



fara TVA



Rexroth

TR-16159 Bored

CNR:

A A10V O 25 DER1/52R-
VXC11N00 -S2131

MNR: R902451639 | FD: 11W26

SN: 11311520

TR 1

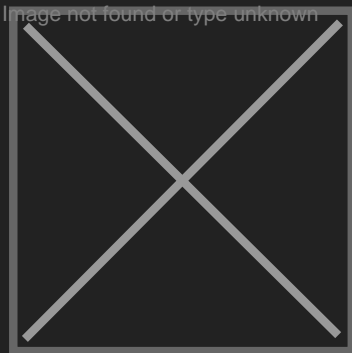
$v_g = 25 \text{ cm}^3$ $n = 2600 \text{ min}^{-1}$ ROTATION
DR=250 bar FR=25 bar PR= kW





SPECIFICATIONS

Type of pump	plunger pump	Center distance between mounting holes C-C01a (mm)	30.2
Number of elements	1	Center distance between mounting holes C-C02a (mm)	58.7
Type of flange	type B	Thread type of connection pressure port 1st element TA-C0b	M10
Center distance of mounting holes flange C1 (mm)	146	Center distance between mounting holes C-C01b (mm)	22.2
Total length of pump L1 (mm)	223	Center distance between mounting holes C-C02b (mm)	47.6
Neck diameter D2 (mm)	101.5	Flow control valve present	YES
Type of shaft	type B	Biggest Thread type valve TA3	7/16 UNF
Distance from flange to end L2 (mm)	20	Material of the housing	metal
Diameter of shaft D3 (mm)	25		
Key (way) width W (mm)	10		
Direction of rotation	clockwise		
Thread type of connections suction 1st element	M10		



SC Stivuitoare-Lize SRL

Telefon: 0040 744 136 717

Email: office@stivuitoare-lize.ro

Website: <http://stivuitoare-lize.ro/>

Comuna Corunca, Str. Principala, nr. 412-413, judet Mures, Romania