



SC Stivuitoare-Lize SRL

Telefon: 0040 744 136 717

Email: [office@stivuitoare-lize.ro](mailto:office@stivuitoare-lize.ro)

Website: <http://stivuitoare-lize.ro/>

Comuna Corunca, Str. Principala, nr. 412-413, judet Mures, Romania

**Electrostivuitoare Hyster J2.5XN, Electric, 2.5 tone, AN  
2014, BATERIE 2019, Catarg triplex cu ridicare libera  
(copiaz?)**

---





**Pouze Kvalifikovaná  
Obsluha Nebo Technik**



Prostudujte si  
provozní příručku  
uloženou poblíž  
sedadla obsluhy.  
Nedodržování pokynů pro  
obsahu, kontrolu a údržbu  
může mít za následek vážný  
úraz nebo usmrcení!

**NOSNOST SE ZDVIHOVÝM  
ZAŘÍZENÍM VE SVISLÉ  
POLOZE A VÝBAVOU PODLE  
OBRAZKU**



Model vozíku **J2.5XN**  
Rok **2014**

Sériové číslo **A276B05327M** Jmenovitý výkon **20 kW**  
Připojené zařízení: **1067 mm Nosic Vidli + Polohovač S Bočním Posunem Vidlic**  
**Bolzoni Auramo FFP2511A + 1200 mm Nosné vidle**

Hmotnost vozíku bez baterie **3240 kg** Volty **80**

Hmotnost vozíku s baterií **4870 kg**

Připustný rozsah hmotnosti baterie **1480 kg až 1640 kg**

Šířka běhounu **938 mm** Sklon dozadu **5.0°**

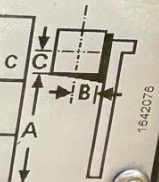
Pneumatiky hnaných kol **23X10-12 tuhá** Pneumatiky řízených kol **18X7-8 tuhá**

Rozměr **23X10-12 tuhá**

Plnicí tlak ---



Maximální nosnost	Vyska bremene rozměry A	Těžiště břemene	
		rozměry B	rozměry C
2010 kg	5550 mm	500 mm	500 mm
1830 kg	5550 mm	600 mm	600 mm



Hyster Europe, Centennial House, Frimley Business Park, Frimley, United Kingdom

**DYNAMATCH AND HSS**  
THIS INFORMATION IS THE PROPERTY OF HYSTER AND IS NOT TO BE REPRODUCED OR TRANSMITTED IN ANY FORM OR BY ANY MEANS, ELECTRONIC OR MECHANICAL, INCLUDING PHOTOCOPYING, RECORDING, OR BY ANY INFORMATION STORAGE AND RETRIEVAL SYSTEM. ALL RIGHTS RESERVED. HYSTER IS A REGISTERED TRADEMARK OF HYSTER GROUP, INC. © 2014 HYSTER GROUP, INC. ALL RIGHTS RESERVED.

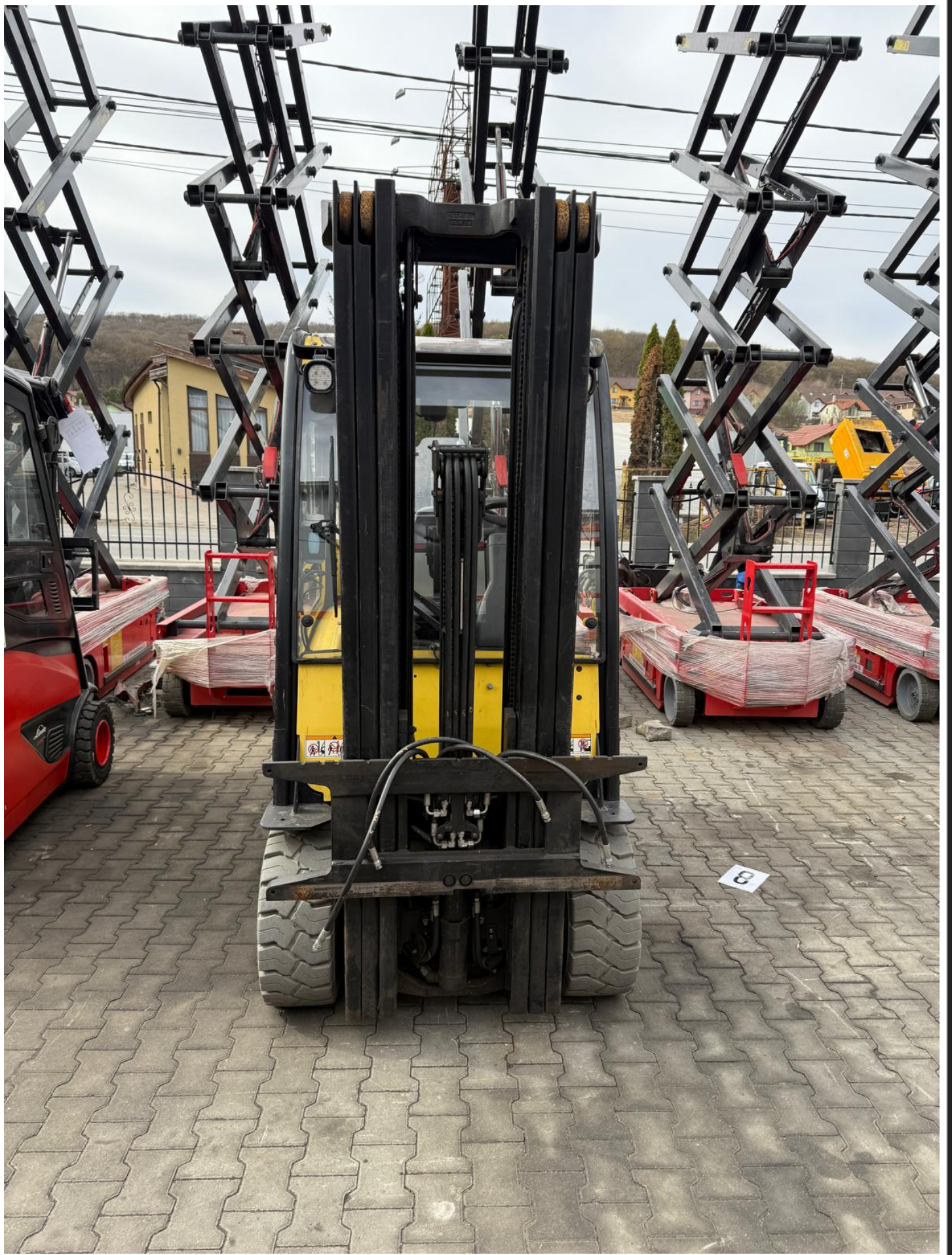
**USA**  
U.S. DEPARTMENT OF LABOR  
 OCCUPATIONAL SAFETY AND HEALTH  
 29 CFR 1910.101(a)(1)(ii)  
 1910.101(a)(2)(ii)  
 1910.101(a)(3)(ii)  
 1910.101(a)(4)(ii)  
 1910.101(a)(5)(ii)  
 1910.101(a)(6)(ii)  
 1910.101(a)(7)(ii)  
 1910.101(a)(8)(ii)  
 1910.101(a)(9)(ii)  
 1910.101(a)(10)(ii)  
 1910.101(a)(11)(ii)  
 1910.101(a)(12)(ii)  
 1910.101(a)(13)(ii)  
 1910.101(a)(14)(ii)  
 1910.101(a)(15)(ii)  
 1910.101(a)(16)(ii)  
 1910.101(a)(17)(ii)  
 1910.101(a)(18)(ii)  
 1910.101(a)(19)(ii)  
 1910.101(a)(20)(ii)  
 1910.101(a)(21)(ii)  
 1910.101(a)(22)(ii)  
 1910.101(a)(23)(ii)  
 1910.101(a)(24)(ii)  
 1910.101(a)(25)(ii)  
 1910.101(a)(26)(ii)  
 1910.101(a)(27)(ii)  
 1910.101(a)(28)(ii)  
 1910.101(a)(29)(ii)  
 1910.101(a)(30)(ii)  
 1910.101(a)(31)(ii)  
 1910.101(a)(32)(ii)  
 1910.101(a)(33)(ii)  
 1910.101(a)(34)(ii)  
 1910.101(a)(35)(ii)  
 1910.101(a)(36)(ii)  
 1910.101(a)(37)(ii)  
 1910.101(a)(38)(ii)  
 1910.101(a)(39)(ii)  
 1910.101(a)(40)(ii)  
 1910.101(a)(41)(ii)  
 1910.101(a)(42)(ii)  
 1910.101(a)(43)(ii)  
 1910.101(a)(44)(ii)  
 1910.101(a)(45)(ii)  
 1910.101(a)(46)(ii)  
 1910.101(a)(47)(ii)  
 1910.101(a)(48)(ii)  
 1910.101(a)(49)(ii)  
 1910.101(a)(50)(ii)



**STIVUITOARE-LIZE SRL**













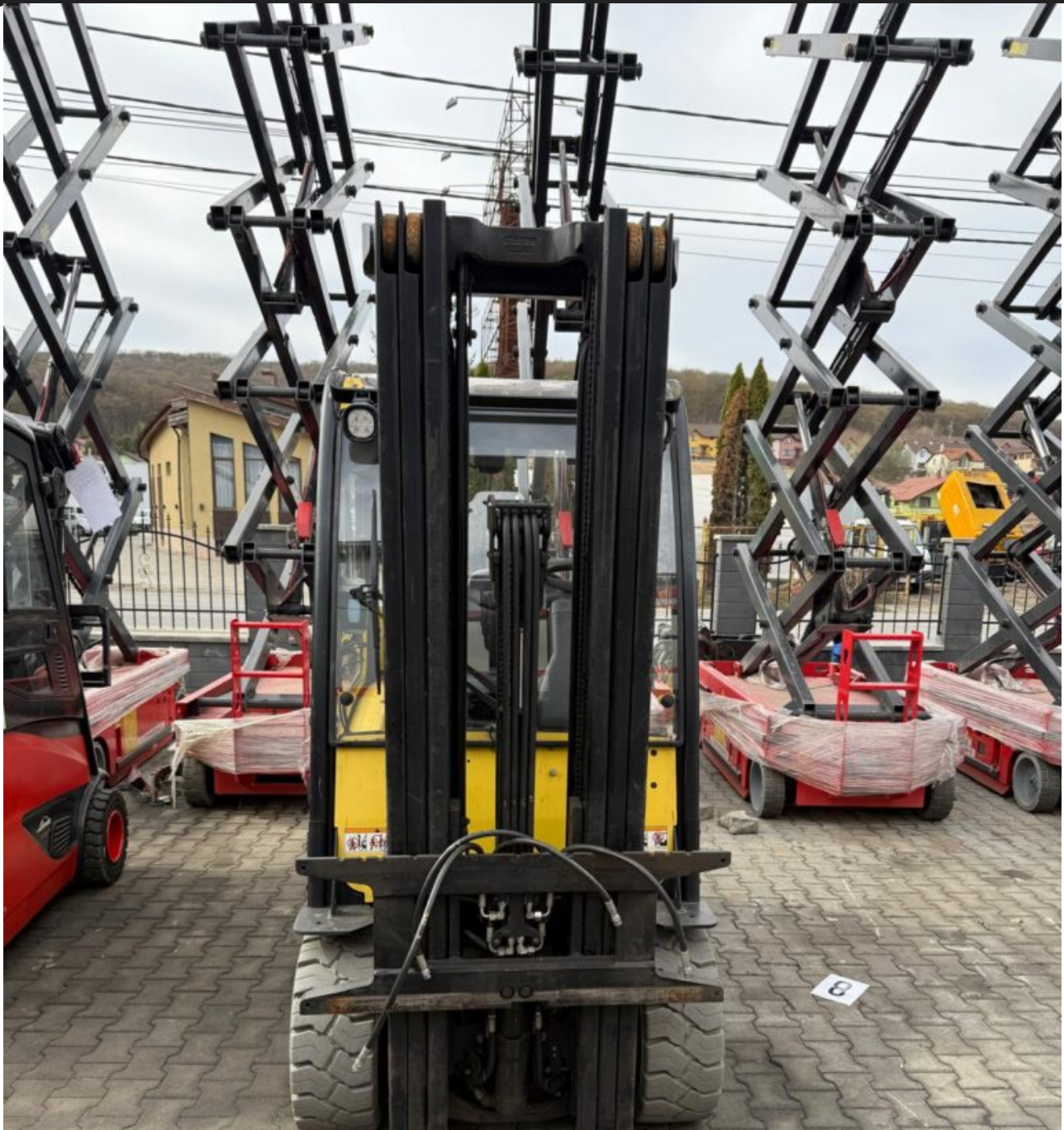
**Electrostivuito Hyster J2.5XN, Electric, 2.5 tone, AN 2014, BATERIE 2019, Catarg triplex cu ridicare libera**

<b>Marca:</b>	<b>Hyster J2.5XN</b>
<b>Combustibil:</b>	<b>Electric</b>
<b>Capacitate de ridicare:</b>	<b>2.5 tone</b>
<b>Inaltime de ridicare:</b>	<b>5.50 m</b>
<b>Inaltime catarg:</b>	<b>2.35 m</b>
<b>An de fabricatie:</b>	<b>2014</b>
<b>Catarg:</b>	<b>triplex cu ridicare libera</b>
<b>Translatie:</b>	<b>NU</b>
<b>Garantie:</b>	<b>3 luni</b>

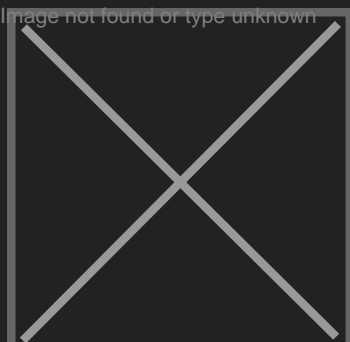
**Alte detalii:** **In stare de functionare Cabina cu incalzire, lipseste usa stanga Anvelope pline fata spate NOI Cu incarcator BATERIE 2019 Lame incluse in pret cu lungimea de 1200mm Cu 4 comenzi pe distribuitor Stivuitoorul este pregatit cu documentatia pentru ISCIR-izare Asiguram service in toata tara Tara de origine: Germania Valoarea stivuitoorului se va factura la cursul Inq din data vanzarii Se emite**

**Pret:**









SC Stivuitoare-Lize SRL

Telefon: 0040 744 136 717

Email: [office@stivuitoare-lize.ro](mailto:office@stivuitoare-lize.ro)

Website: <http://stivuitoare-lize.ro/>

Comuna Corunca, Str. Principala, nr. 412-413, judet Mures, Romania